



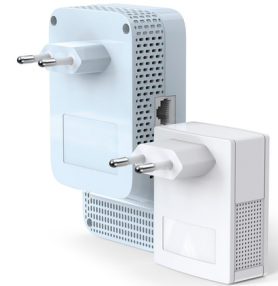
TP-Link TL-WPA1000 KIT adattatore di rete PowerLine 1000 Mbit/s Collegamento ethernet LAN Wi-Fi Bianco 2 pz

Marchio : TP-Link

Codice prodotto: TL-WPA1000 KIT

Nome del prodotto : TL-WPA1000 KIT

TP-Link TL-WPA1000 KIT. Velocità massima di trasferimento dati: 1000 Mbit/s, Standard di rete: IEEE 1901, IEEE 802.11a, IEEE 802.11ac, IEEE 802.11b, IEEE 802.11g, IEEE 802.11n, IEEE 802.3, IEEE..., Presa di corrente: Tipo C. Colore del prodotto: Bianco, Tipo di antenna: Interno. Sistema operativo Windows supportato: Windows 10, Windows 11, Windows 8, Windows 8.1, Windows Vista, Windows XP, Compatibilità sistema operativo Mac: MacOS. Larghezza imballo: 230 mm, Profondità imballo: 190 mm, Altezza imballo: 100 mm. Quantità per pacco: 2 pz, Cavi inclusi: LAN (RJ-45)



Prestazione		Design	
Velocità massima di trasferimento dati *	1000 Mbit/s	Indicatori LED	✓
Collegamento ethernet LAN *	✓	Colore del prodotto *	Bianco
Tipo di interfaccia LAN Ethernet	Gigabit Ethernet	Requisiti di sistema	
Velocità trasferimento Ethernet LAN	10,100,1000 Mbit/s	Sistema operativo Windows supportato	Windows 10, Windows 11, Windows 8, Windows 8.1, Windows Vista, Windows XP
Quantità porte Ethernet LAN (RJ-45)	1	Sistema operativo Linux supportato	✓
Wi-Fi *	✓	Compatibilità Mac	✓
Wi-Fi standard	Wi-Fi 5 (802.11ac)	Compatibilità sistema operativo Mac	MacOS
Standard Wi-Fi	802.11a, 802.11ad, 802.11b, 802.11g, Wi-Fi 4 (802.11n), Wi-Fi 5 (802.11ac)	Condizioni ambientali	
Banda Wi-Fi	Dual-band (2.4 GHz/5 GHz)	Intervallo temperatura di funzionamento	0 - 40 °C
Standard di rete *	IEEE 1901, IEEE 802.11a, IEEE 802.11ac, IEEE 802.11b, IEEE 802.11g, IEEE 802.11n, IEEE 802.3, IEEE 802.3ab, IEEE 802.3u	Range di umidità di funzionamento	10 - 90%
Presenza di corrente *	Tipo C	Dimensioni e peso	
Presenza elettrica integrata *	✓	Larghezza imballo	230 mm
Standard PowerLine	HomePlug AV2	Profondità imballo	190 mm
Modulazione	OFDM	Altezza imballo	100 mm
Algoritmi di sicurezza supportati	128-bit AES, WEP, WPA-PSK, WPA2-PSK	Peso dell'imballo	580 g
Massima distanza di funzionamento	300 m	Dettagli tecnici	
Plug & Play	✓	Certificati di conformità	CE, RoHS
Design		Contenuto dell'imballo	
Tipo di antenna	Interno	Quantità per pacco *	2 pz
		Cavi inclusi	LAN (RJ-45)



4897098688403

Disclaimer. The information published here (the "Information") is based on sources that can be considered reliable, typically the manufacturer, but this Information is provided "AS IS" and without guarantee of correctness or completeness. The Information is only indicative and can be changed at any time without notification. No rights can be based on the Information. Suppliers or aggregators of this Information do not accept any liability with regard to the content of (web)pages and other documents, including its Information. The publisher of the Information can not be held liable for the content of 3rd party websites that are linking this Information or are linked to from this Information. You as the User of the Information are solely responsible for the choice and usage of this Information. You are not entitled to transfer, copy or otherwise multiply or distribute the Information. You are obliged to follow the directions of the copyright owner(s) with regard to the use of the Information. Exclusively Dutch law is applicable. With regard to price and stock data on the site, the publisher followed a number of starting points, which are not necessarily relevant for your private or business circumstances. Therefore, the price and stock data are only indicative and are subject to changes. You are personally responsible for the way you use and apply this information. As a user of the Information or sites or documents in which this Information is included, you will adhere to standard fair use including avoidance of spamming, ripping, intellectual-property violations, privacy violations, and any other illegal activity.

Publication date: 13-AUG-2024. Prints or copies of Information are only valid on the printed Publication date