

Panasonic

Basic Operating Instructions

Mode d'emploi de base

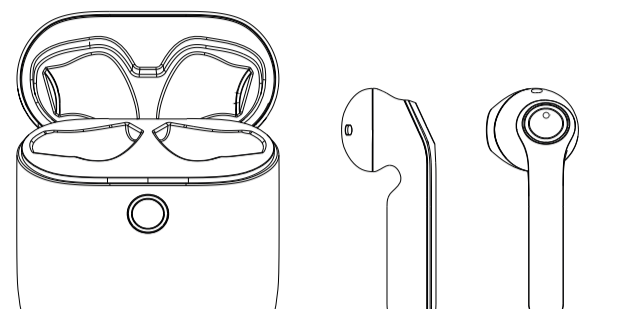
Kurz-Bedienungsanleitung

Digital Wireless Stereo Earphones

Écouteurs stéréo sans fil numériques

Digitale drahtlose Stereo-Öhrhörer

Model No./Modèle No.: **RZ-B100W**



E

Manufactured by: Panasonic Corporation, Katsushika, Osaka, Japan. Authorized Representative in Europe: Panasonic Marketing Europe GmbH, Panasonic Testing Centre, Wirsberg 15, 22525 Hamburg, Germany.



Panasonic Corporation
© Panasonic Corporation 2020

Thank you for purchasing this product. Please read these instructions carefully before using this product, and save this manual for future use.

Merci d'avoir acheté ce produit. Veuillez lire attentivement les instructions avant d'utiliser ce produit, et conserver ce manuel pour consultation ultérieure.

Wir danken Ihnen, dass Sie sich für dieses Produkt unserer Hausa entschieden haben. Bitte lesen Sie diese Anleitung vor der Inbetriebnahme dieses Produkts aufmerksam durch, und bewahren Sie diese Handbuch für spätere Bezugnahmen griffbereit auf.

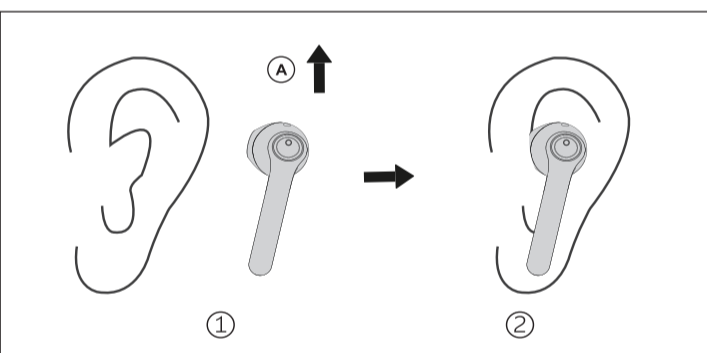
For the United Kingdom and Ireland customers.

Sales and Support Information
Rakom, Osaka, Japan
For customers within the UK: 0344 844 3899
For customers within Ireland: 01 298 83200
Monday - Friday 9:00 am - 5:00 pm (Excluding public holidays).
For further support for your product, please visit our website: www.panasonic.co.uk

Direct Sales at Panasonic UK
Order accessories and consumable items for your product with ease and confidence by phoning our Customer Communications Centre Monday - Friday 9:00 am - 5:00 pm (Excluding public holidays). Or go on line through our Internet accessory ordering application at www.eas-europe.com

All accessories and distribution facilities are provided directly by Panasonic UK.
• Most major credit and debit cards accepted.
• All accessories and consumable items are available for purchase.
• You should use extreme caution or temporarily discontinue use in potentially hazardous situations.

This unit may receive radio interference caused by mobile telephones during use. If such interference occurs, please increase separation between this unit and the mobile telephone.



English

How to fit the earphones

- 1 Check the orientation (up, down and L (left) and R (right) of the earphones.
- 2 Fit firmly by turning the earphones a small amount at a time.

• Confirm that the earphones will not fall from your ears after you have fitted them.
• The left earphone has a raised dot indicating the L side.

French

Comment positionner les écouteurs

- 1 Vérifier l'orientation (haut, bas et à côté L (gauche) et R (droit) des écouteurs.
- 2 Positionner correctement en tournant légèrement à chaque fois les écouteurs dans le sens indiqué par la flèche sur l'illustration.

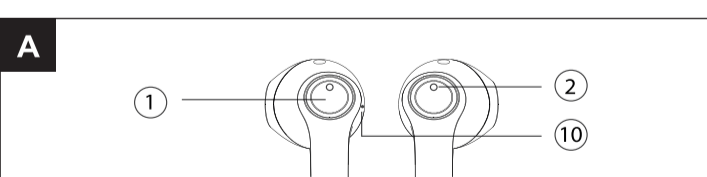
• Vérifier que les écouteurs ne tombent pas de vos oreilles une fois positionnés.
• L'écouteur gauche comporte un point en relief indiquant le côté L.

Deutsch

Einsetzen der Ohrhörer

- 1 Überprüfen Sie die Ausrichtung der Ohrhörer (oben, unten bzw. L (links) und R (rechts)).
- 2 Um einen festen Sitz zu erzielen, drehen Sie die Ohrhörer beim Einsetzen erstens fest und anschließend dann ein wenig hin und her.

• Vergewissern Sie sich nach dem Einsetzen, dass die Ohrhörer nicht aus Ihren Ohren herausrutschen können.
• Für einen festen Sitz überprüfen Sie sich an der Kennzeichnung L. Stelle eine punktförmige Erhebung.



A

Part names

- Main unit (earphones)
(Earphones "Receiver" side instructions)
1 Multifunction Touch Control
2 LED Indicator
3 Microphone
4 Charging Contacts
5 Reset Button

Charging

- 1 Use the USB charging cord (supplied) to connect the charging cradle to a computer.
2 Put the earphones into the charging cradle. The charging cradle LEDs blink (white) while the charging cradle is starting. Charging is complete when they turn off.

• Confirm the L and R side of the earphones, then insert in charging cradle.
• The earphone LEDs (white) have illuminated (charging starts).
• Charging is complete when they turn off.

Turning the earphones on and off

- 1 To turn the earphones on:
• Open the charger cradle lid.
• The earphones turn on. A beep will sound and the earphone LEDs lit white and blue alternately. The batteries are charging when they lit in white.

- 2 To turn the earphones off:
• Put the earphones into the charging case and close lid.
• If something with a magnet in it is brought close to the earphones while they are being used, the earphones may magnet off. Move the item with the magnet in it away if they are using.

English
For detailed information about the features of your earphones, refer to operating instructions, which is available by visiting the support page for this product at www.panasonic.eu
• "Operating Instructions (PDF format)"
To read, download it from the website.
• Click the desired language.

French
Pour plus d'informations concernant les caractéristiques de vos écouteurs, veuillez consulter le mode d'emploi, accessible à partir de la page d'assistance relative à ce produit sur le site www.panasonic.eu
• Cliquez sur la langue désirée.
• Cliquez sur le lien correspondant à "Mode d'emploi (format PDF)".
Pour en prendre connaissance, téléchargez-le depuis le site Web.
Cliquez sur la langue désirée.
Cliquez sur le lien correspondant à "Mode d'emploi (format PDF)".

Deutsch
Ausführliche Informationen zu den Funktionen Ihrer Ohrhörer finden Sie in der Bedienungsanleitung, die Ihnen auf der Support-Seite für dieses Produkt unter www.panasonic.eu zur Verfügung steht.
Bedienungsanleitung (PDF-Format)
Bitte laden Sie diese Anleitung vor der Inbetriebnahme dieses Produkts aufmerksam durch, und bewahren Sie sie auf die gewünschte Sprache.

English
Expressions used in this document:
• The product illustrations may differ from the actual product.

French
Expressions utilisées dans ce document:
• Les illustrations de produit peuvent différer de l'apparence réelle du produit.

Deutsch
In diesem Dokument verwendete Symbole:
• Die Produktabbildungen können vom tatsächlichen Produkt abweichen.

English
Please check and identify the supplied accessories:
1x USB-C Charging Cable

Safety precautions

- WARNING:**
To reduce the risk of fire, electric shock or product damage:
• Do not expose this unit to rain, moisture, dripping or splashing.
• Do not place objects filled with liquids, such as vases, on this unit.
• Use the recommended accessories.
• Do not remove covers.
• Do not repair this unit by yourself. Refer servicing to qualified service personnel.

Avoid use in the following conditions:
• High or low extreme temperatures during use, storage or transportation.
• Dispose of a battery into fire or a hot oven, or mechanically crushing or cutting of a battery, that can result in an explosion or fire.
• Extremely high temperature and/or extremely low air pressure that can result in an explosion or the leakage of harmful fluid or gas.

AVOID using or placing this unit near sources of heat:
• Do not listen with this unit at high volume in places where you need to hear sounds from the surrounding environment for safety, such as at railroad crossings, and construction sites. This unit is not self-reliant.
• Do not use this unit while driving or operating heavy machinery. Such devices as a clock may not operate correctly.
• Be aware that this unit (earphones) may get warm while charging or immediately after charging. Depending on your constitution and health status, putting the earphones on may trigger adverse reactions such as skin rashes, itching, and redness of the ears. If the earphones have just been taken out of the charging cradle and are still warm.

CAUTION:
To reduce the risk of fire, electric shock or product damage:
• Do not install or place this unit in a bookcase, built-in cabinet or in another confined space. Ensure this unit is well ventilated.
• Do not obstruct this unit's ventilation openings with newspapers, tablecloths, curtains, and similar items.
• Do not place sources of naked flames, such as lit cigarettes, on this unit.

Batteries:
• Do not heat or expose to flame.
• Do not leave the battery(s) in a car exposed to direct sunlight for a long period of time with doors and windows closed.

Earphones:
• Keep the earphones out of reach of children to prevent swallowing.

Allergies:
• Discontinue use if you experience discomfort with the earphones or any other parts that directly contact your skin.
• Continued use may cause rashes or other allergic reactions.
• Excessive sound pressure from earphones and headphones can cause hearing loss.
• Do not use your earphones at a high volume. Hearing experts advise against continuous extended play.
• If you experience a ringing in your ears, reduce volume or discontinue use.
• Do not use while operating a motorized vehicle. It may create a traffic hazard and is illegal in many areas.
• You should use extreme caution or temporarily discontinue use in potentially hazardous situations.

This unit may receive radio interference caused by mobile telephones during use. If such interference occurs, please increase separation between this unit and the mobile telephone.

Use only the supplied USB charging cord when connecting to a computer.

The symbols on this product (including the accessories) represent the following: DC

Only for European Union and countries with recycling systems.
These symbols indicate separate collection of waste electrical and electronic equipment or waste batteries.
More detailed information is contained in "Operating Instructions (PDF format)".

Identical to Conformity (DoC) Declaration, "Panasonic Corporation" declares that this product is in compliance with the essential requirements and other relevant provisions of Directive 2014/53/EU.
Customers can download a copy of the original DoC or the RE products from our DoC server: <http://www.ptc.panasonic.eu>
Contact to Authorized Representative: Panasonic Marketing Europe GmbH, Panasonic Testing Centre, Wirsberg 15, 22525 Hamburg, Germany

Type of wireless Frequency band Maximum power (dBm e.r.p.)
Bluetooth® 2402 - 2480 MHz 4 dBm

Specifications

General
Power supply (Charging cradle) DC 5 V 1 A
Earphones: 3.8 V
Lithium polymer: 40 mAh
Charging Cradle: 3.7 V
Lithium polymer: 400 mAh

Internal Battery
Earphones: 3.8 V
Lithium polymer: 40 mAh
Charging Cradle: 3.7 V
Lithium polymer: 400 mAh

Operating time** (Earphones) Approx. 4 hours (AAC/SBC)
Earphones with Charging cradle: Approx. 2 hours and 30 mins

Operating time** (Earphones + Charging cradle) Approx. 16 hours (AAC/SBC)
Earphones with Charging cradle: Approx. 2 hours and 30 mins

Charging time** (25°C)
Earphones: Approx. 1.5 hours and 45 mins
Earphones with Charging cradle: Approx. 2 hours and 30 mins

Operating temperature range 10°C to 35°C
Operating humidity range 0°C to 40°C

Operating humidity range 35% NRH to 75% NRH (no condensation)

Mass Earphone: Approx. 5g (on one side only, L and R are the same)
Charging cradle: Approx. 41g

Bluetooth® section
Max RF power 4.0 dBm
Frequency band 2402 MHz to 2480 MHz
Supported profiles A2DP, AVRCP, HFP

Charging cradle section
Charging terminal USB Type-C Shape

Water resistant IPX4 equivalent (earphones only)

Water resistant IPX4 equivalent (earphones only)

Water resistant IPX4 equivalent (earphones only)

Water resistant IPX4 equivalent (earphones only)

Water resistant IPX4 equivalent (earphones only)

Water resistant IPX4 equivalent (earphones only)

Water resistant IPX4 equivalent (earphones only)

Water resistant IPX4 equivalent (earphones only)

Water resistant IPX4 equivalent (earphones only)

Water resistant IPX4 equivalent (earphones only)

Water resistant IPX4 equivalent (earphones only)

Water resistant IPX4 equivalent (earphones only)

Water resistant IPX4 equivalent (earphones only)

Water resistant IPX4 equivalent (earphones only)

Water resistant IPX4 equivalent (earphones only)

Water resistant IPX4 equivalent (earphones only)

Water resistant IPX4 equivalent (earphones only)

Water resistant IPX4 equivalent (earphones only)

Water resistant IPX4 equivalent (earphones only)

Water resistant IPX4 equivalent (earphones only)

Water resistant IPX4 equivalent (earphones only)

Water resistant IPX4 equivalent (earphones only)

Water resistant IPX4 equivalent (earphones only)

Water resistant IPX4 equivalent (earphones only)

Water resistant IPX4 equivalent (earphones only)

Water resistant IPX4 equivalent (earphones only)

Water resistant IPX4 equivalent (earphones only)

Water resistant IPX4 equivalent (earphones only)

Water resistant IPX4 equivalent (earphones only)

Water resistant IPX4 equivalent (earphones only)

Water resistant IPX4 equivalent (earphones only)

Water resistant IPX4 equivalent (earphones only)

Water resistant IPX4 equivalent (earphones only)

Water resistant IPX4 equivalent (earphones only)

Water resistant IPX4 equivalent (earphones only)

Water resistant IPX4 equivalent (earphones only)

Water resistant IPX4 equivalent (earphones only)

Water resistant IPX4 equivalent (earphones only)

Water resistant IPX4 equivalent (earphones only)

Water resistant IPX4 equivalent (earphones only)

Water resistant IPX4 equivalent (earphones only)

Water resistant IPX4 equivalent (earphones only)

Water resistant IPX4 equivalent (earphones only)

Water resistant IPX4 equivalent (earphones only)

Water resistant IPX4 equivalent (earphones only)

Water resistant IPX4 equivalent (earphones only)

Water resistant IPX4 equivalent (earphones only)

Water resistant IPX4 equivalent (earphones only)

Water resistant IPX4 equivalent (earphones only)

Water resistant IPX4 equivalent (earphones only)

Water resistant IPX4 equivalent (earphones only)

Water resistant IPX4 equivalent (earphones only)

Water resistant IPX4 equivalent (earphones only)

Water resistant IPX4 equivalent (earphones only)

Water resistant IPX4 equivalent (earphones only)

Water resistant IPX4 equivalent (earphones only)

Water resistant IPX4 equivalent (earphones only)

Water resistant IPX4 equivalent (earphones only)

Water resistant IPX4 equivalent (earphones only)

Water resistant IPX4 equivalent (earphones only)

Water resistant IPX4 equivalent (earphones only)

Water resistant IPX4 equivalent (earphones only)

Water resistant IPX4 equivalent (earphones only)

Water resistant IPX4 equivalent (earphones only)

Water resistant IPX4 equivalent (earphones only)

Water resistant IPX4 equivalent (earphones only)

Water resistant IPX4 equivalent (earphones only)

Water resistant IPX4 equivalent (earphones only)

Water resistant IPX4 equivalent (earphones only)

Water resistant IPX4 equivalent (earphones only)

Water resistant IPX4 equivalent (earphones only)

Water resistant IPX4 equivalent (earphones only)

Water resistant IPX4 equivalent (earphones only)

Water resistant IPX4 equivalent (earphones only)

Water resistant IPX4 equivalent (earphones only)

Water resistant IPX4 equivalent (earphones only)

Water resistant IPX4 equivalent (earphones only)

Water resistant IPX4 equivalent (earphones only)

Water resistant IPX4 equivalent (earphones only)

Water resistant IPX4 equivalent (earphones only)

Water resistant IPX4 equivalent (earphones only)

Copyright Notice

This product uses open source software based on the Free Software Foundation's GPL and other licenses. The relevant conditions apply to the software. The license information on our website. The source code licensed under the conditions of the GPL is available publicly.

• Only for European Union and countries with recycling systems.
These symbols indicate separate collection of waste electrical and electronic equipment or waste batteries.
More detailed information is contained in "Operating Instructions (PDF format)".

Identical to Conformity (DoC) Declaration, "Panasonic Corporation" declares that this product is in compliance with the essential requirements and other relevant provisions of Directive 2014/53/EU.
Customers can download a copy of the original DoC or the RE products from our DoC server: <http://www.ptc.panasonic.eu>
Contact to Authorized Representative: Panasonic Marketing Europe GmbH, Panasonic Testing Centre, Wirsberg 15, 22525 Hamburg, Germany

Type of wireless Frequency band Maximum power (dBm e.r.p.)
Bluetooth® 2402 - 2480 MHz 4 dBm

Specifications

General
Power supply (Charging cradle) DC 5 V 1 A
Earphones: 3.8 V
Lithium polymer: 40 mAh
Charging Cradle: 3.7 V
Lithium polymer: 400 mAh

Internal Battery
Earphones: 3.8 V
Lithium polymer: 40 mAh
Charging Cradle: 3.7 V
Lithium polymer: 400 mAh

Operating time** (Earphones) Approx. 4 hours (AAC/SBC)
Earphones with Charging cradle: Approx. 2 hours and 30 mins

Operating time** (Earphones + Charging cradle) Approx. 16 hours (AAC/SBC)
Earphones with Charging cradle: Approx. 2 hours and 30 mins

Charging time** (25°C)
Earphones: Approx. 1.5 hours and 45 mins
Earphones with Charging cradle: Approx. 2 hours and 30 mins

Operating temperature range 10°C to 35°C
Operating humidity range 0°C to 40°C

Operating humidity range 35% NRH to 75% NRH (no condensation)

Mass Earphone: Approx. 5g (on one side only, L and R are the same)
Charging cradle: Approx. 41g

Bluetooth® section
Max RF power 4.0 dBm
Frequency band 2402 MHz to 2480 MHz
Supported profiles A2DP, AVRCP, HFP

Charging cradle section
Charging terminal USB Type-C Shape

Water resistant IPX4 equivalent (earphones only)

Water resistant IPX4 equivalent (earphones only)

Water resistant IPX4 equivalent (earphones only)

Water resistant IPX4 equivalent (earphones only)

Water resistant IPX4 equivalent (earphones only)

Water resistant IPX4 equivalent (earphones only)

Water resistant IPX4 equivalent (earphones only)

Water resistant IPX4 equivalent (earphones only)

Water resistant IPX4 equivalent (earphones only)

Water resistant IPX4 equivalent (earphones only)

Water resistant IPX4 equivalent (earphones only)

Water resistant IPX4 equivalent (earphones only)

Water resistant IPX4 equivalent (earphones only)

Water resistant IPX4 equivalent (earphones only)

Water resistant IPX4 equivalent (earphones only)

Water resistant IPX4 equivalent (earphones only)

Water resistant IPX4 equivalent (earphones only)

Water resistant IPX4 equivalent (earphones only)

Water resistant IPX4 equivalent (earphones only)

Water resistant IPX4 equivalent (earphones only)

Water resistant IPX4 equivalent (earphones only)

Water resistant IPX4 equivalent (earphones only)

Water resistant IPX4 equivalent (earphones only)

Water resistant IPX4 equivalent (earphones only)

Water resistant IPX4 equivalent (earphones only)

Water resistant IPX4 equivalent (earphones only)

Water resistant IPX4 equivalent (earphones only)

Water resistant IPX4 equivalent (earphones only)

Water resistant IPX4 equivalent (earphones only)

Water resistant IPX4 equivalent (earphones only)

Water resistant IPX4 equivalent (earphones only)

Water resistant IPX4 equivalent (earphones only)

Water resistant IPX4 equivalent (earphones only)

Water resistant IPX4 equivalent (earphones only)

Water resistant IPX4 equivalent (earphones only)

Water resistant IPX4 equivalent (earphones only)

Water resistant IPX4 equivalent (earphones only)

Water resistant IPX4 equivalent (earphones only)

Water resistant IPX4 equivalent (earphones only)

Water resistant IPX4 equivalent (earphones only)

Water resistant IPX4 equivalent (earphones only)

Water resistant IPX4 equivalent (earphones only)

Water resistant IPX4 equivalent (earphones only)

Water resistant IPX4 equivalent (earphones only)

Water resistant IPX4 equivalent (earphones only)

Water resistant IPX4 equivalent (earphones only)

Water resistant IPX4 equivalent (earphones only)

Water resistant IPX4 equivalent (earphones only)

Water resistant IPX4 equivalent (earphones only)

Water resistant IPX4 equivalent (earphones only)

Water resistant IPX4 equivalent (earphones only)

Water resistant IPX4 equivalent (earphones only)

Water resistant IPX4 equivalent (earphones only)

Water resistant IPX4 equivalent (earphones only)

Water resistant IPX4 equivalent (earphones only)

