

# U<sup>⚡</sup>power

 **SINEWAVE**



Atlantis



**1200**  
VA

## HOSTPOWER 1503

Line-Interactive Sinewave UPS

# 1200 VA

# HOSTPOWER 1503

## Line-Interactive Sinewave UPS

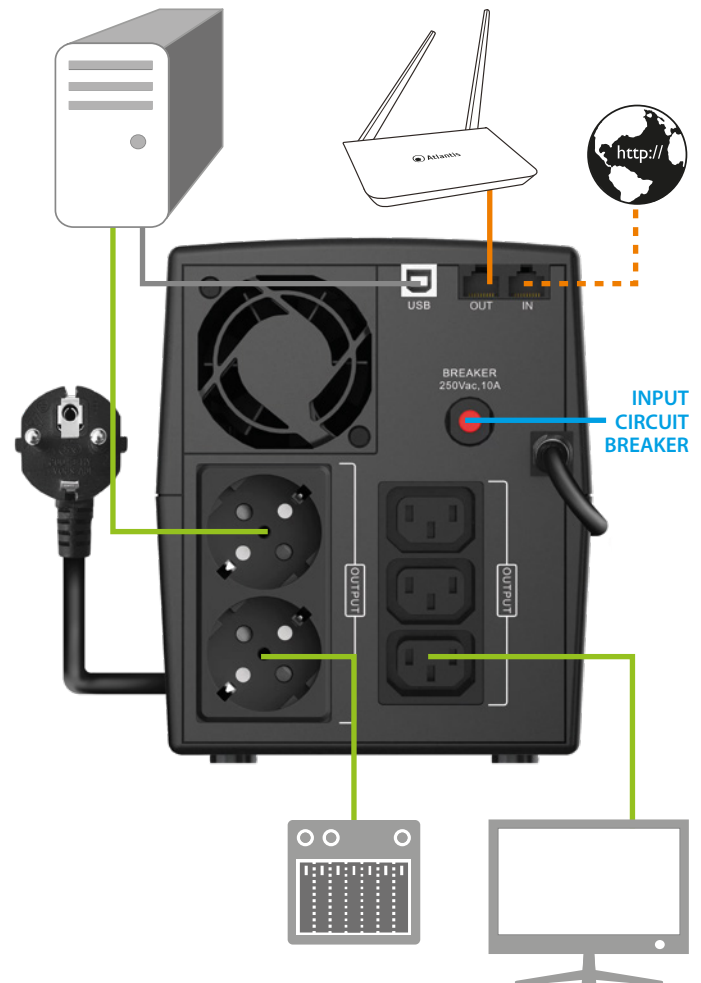


- Microprocessor Based Design a tecnologia Line-Interactive con forma d'onda sinusoidale
- L'AVR multistadio integrato (2 boost, 1 Buck) permette l'utilizzo della rete anche quando le condizioni della stessa non sono ottimali garantendo alle utenze collegate la stabilità della linea di alimentazione
- Tempo di intervento di 4ms (max 10ms)
- Batteria (2x12V@7A/h) per una lunga durata in assenza di rete elettrica
- Gestione avanzata delle Batterie ed estrema semplicità nella sostituzione
- Ampio Display LCD con tutti i parametri di funzionamento
- Interfaccia USB (HID) compatibile anche con svariati apparati (NAS, PC, etc.)
- Protezione Modem integrata
- Il Software di management permette lo spegnimento controllato del sistema e di controllare lo stato di funzionamento dell'UPS

720 WATT	CPU
AVR	WAVEFORM
USB	2x BATTERY 12V@7Ah
NAS SUPPORT	ADVANCED AVR 2 BOOST 1 BUCK
Software Management	LCD

### SPECIFICHE TECNICHE

<b>POWER RATING (VA)</b>	1200
<b>POWER RATING (W)</b>	720
<b>INPUT</b>	- Voltage: 140-300V - Frequency: 50Hz±5%
<b>OUTPUT</b>	- Voltage: 203-262 [AC/AVR] / 230V(±10%) [Battery] - Frequency: 50Hz (±1%) - Advanced AVR: Built-in (2 Boost, 1 Buck) - Waveform: Pure SineWave
<b>TRANSFER Line/Battery</b>	4 ms typical, max 10ms
<b>EFFICIENCY</b>	Total Efficiency Over 85%
<b>BATTERY</b>	- Voltage: 24VDC - Capacity: 12V/7.0Ah - Quantity: 2 - Recharge Time: 4 hours to (90%) - Type: Sealed Maintenance Free Lead Acid VRLA Type
<b>INDICATORS</b>	LCD: Utility Normal, Backup, Battery Load, Input Voltage, Output Voltage, Load and Battery / Fault conditions
<b>PROTECTION</b>	- Overload AC (beep twice a sec) - Overload Inverter (beep twice a sec) - Short Circuit INV ICB & Electric Circuit - Short Circuit AC Electric Circuit - Battery Over-drain Two stages: Controlled Battery Low Warning & Cut Off - Spike Suppression - Noise Suppression (Fanless)
<b>ALARMS</b>	- Battery Mode (sound every 30 seconds) - Low Battery (sound every 2 seconds) - OverLoad (sound every 0.5 seconds) - Battery Replacement Alarm (sound every 2seconds) - Fault (continuously sounding)
<b>CONNECTIONS</b>	Output 2xSchuko   3xIEC   Computer USB (HID)   RJ45/11
<b>ACTIVE FAN</b>	Yes (2 speeds)
<b>NOISE LEVEL</b>	Less than 45dB
<b>DIMENSIONS (WxHxD)</b>	148 x 178 x 298 mm
<b>NET WEIGHT</b>	9,3 Kg (with Battery)
<b>ENVIRONMENTS</b>	- Temperature 0°-40° C - Humidity 0-90% (non-condensing)
<b>CERTIFICATION</b>	CE



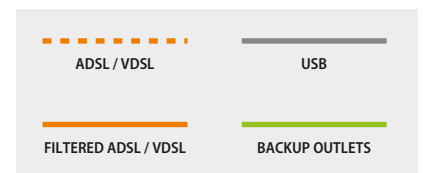
<b>BACKUP TIME</b>	<b>100%</b> 720W	<b>75%</b> 540W	<b>50%</b> 360W	<b>25%</b> 180W
<b>Minute / Seconds</b>	Few Seconds	1':05"	5':00"	18':20"

UPS  
Code: A03-HP1503  
EAN: 8026974023151

Tutti i marchi riportati sono registrati ed appartengono ai rispettivi proprietari. Le specifiche riportate possono cambiare senza preavviso. Nessuna responsabilità per errori e/o omissioni | All rights reserved. Specifications are subject to change without prior notice. No liability for technical errors and/or omissions.



# Atlantis



# 1200 VA

# HOSTPOWER 1503

## Line-Interactive Sinewave UPS



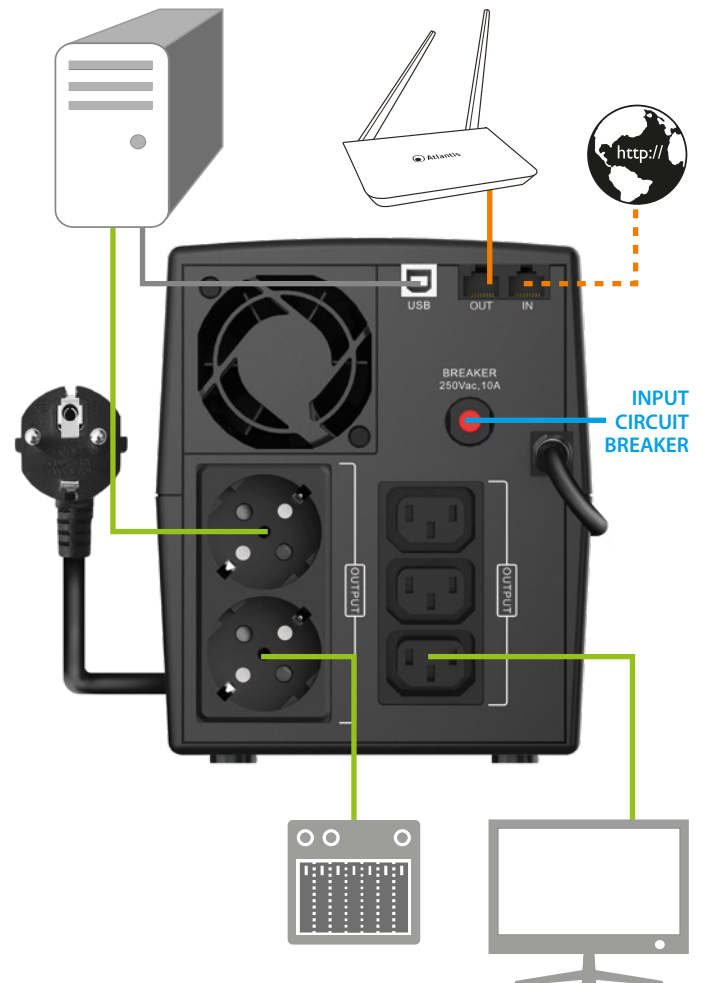
- Microprocessor Based Design Line Interactive SineWave Topology
- Wide input range application without using battery power (AVR, 2 boost, 1 Buck)
- Transfer time less than 4ms (max 10ms)
- Long time backup (battery 2x12V@7Ah)
- Advanced Battery Management & Easy Swappable Battery Function
- LCD Display
- USB (HID) Communication Interface
- Modem Internet Protection
- Management Software

720 WATT	CPU
AVR	WAVEFORM
USB	2x BATTERY 12V@7Ah
NAS SUPPORT	ADVANCED AVR 2 BOOST 1 BUCK
	LCD



### TECHNICAL SPECIFICATIONS

<b>POWER RATING (VA)</b>	1200
<b>POWER RATING (W)</b>	720
<b>INPUT</b>	- Voltage: 140-300V - Frequency: 50Hz±5%
<b>OUTPUT</b>	- Voltage: 203-262 [AC/AVR] / 230V(±10%) [Battery] - Frequency: 50Hz (±1%) - Advanced AVR: Built-in (2 Boost, 1 Buck) - Waveform: Pure SineWave
<b>TRANSFER Line/Battery</b>	4 ms typical, max 10ms
<b>EFFICIENCY</b>	Total Efficiency Over 85%
<b>BATTERY</b>	- Voltage: 24VDC - Capacity: 12V/7.0Ah - Quantity: 2 - Recharge Time: 4 hours to (90%) - Type: Sealed Maintenance Free Lead Acid VRLA Type
<b>INDICATORS</b>	LCD: Utility Normal, Backup, Battery Load, Input Voltage, Output Voltage, Load and Battery / Fault conditions
<b>PROTECTION</b>	- Overload AC (beep twice a sec) - Overload Inverter (beep twice a sec) - Short Circuit INV ICB & Electric Circuit - Short Circuit AC Electric Circuit - Battery Over-drain Two stages: Controlled Battery Low Warning & Cut Off - Spike Suppression
<b>ALARMS</b>	- Noise Suppression (Fanless) - Battery Mode (sound every 30 seconds) - Low Battery (sound every 2 seconds) - OverLoad (sound every 0.5 seconds) - Battery Replacement Alarm (sound every 2seconds) - Fault (continuously sounding)
<b>CONNECTIONS</b>	Output 2xSchuko   3xIEC   Computer USB (HID)   RJ45/11
<b>ACTIVE FAN</b>	Yes (2 speeds)
<b>NOISE LEVEL</b>	Less than 45dB
<b>DIMENSIONS (WxHxD)</b>	148 x 178 x 298 mm
<b>NET WEIGHT</b>	9,3 Kg (with Battery)
<b>ENVIRONMENTS</b>	- Temperature 0°-40° C - Humidity 0-90% (non-condensing)
<b>CERTIFICATION</b>	CE



<b>BACKUP TIME</b>	<b>100%</b> 720W	<b>75%</b> 540W	<b>50%</b> 360W	<b>25%</b> 180W
<b>Minute / Seconds</b>	Few Seconds	1':05"	5':00"	18':20"

UPS  
Code: A03-HP1503  
EAN: 8026974023151

Tutti i marchi riportati sono registrati ed appartengono ai rispettivi proprietari. Le specifiche riportate possono cambiare senza preavviso. Nessuna responsabilità per errori e/o omissioni | All rights registered. Specifications are subject to change without prior notice. No liability for technical errors and/or omissions.



# Atlantis

