

U[⚡]power



Atlantis



800
VA

HOSTPOWER 1003

Line-Interactive Sinewave UPS

800 VA

HOSTPOWER 1003

Line-Interactive Sinewave UPS



- Microprocessor Based Design a tecnologia Line-Interactive con forma d'onda sinusoidale
- L'AVR multistadio integrato (2 boost, 1 Buck) permette l'utilizzo della rete anche quando le condizioni della stessa non sono ottimali garantendo alle utenze collegate la stabilità della linea di alimentazione
- Tempo di intervento di 4ms (max 10ms)
- Batteria (12V@9Ah) per una lunga durata in assenza di rete elettrica
- Gestione avanzata delle Batterie ed estrema semplicità nella sostituzione
- Ampio Display LCD con tutti i parametri di funzionamento
- Interfaccia USB (HID) compatibile anche con svariati apparati (NAS, PC, etc.)
- Protezione Modem integrata
- Il Software di management permette lo spegnimento controllato del sistema e di controllare lo stato di funzionamento dell'UPS

480
WATT

CPU

AVR



BATTERY
12V@9Ah



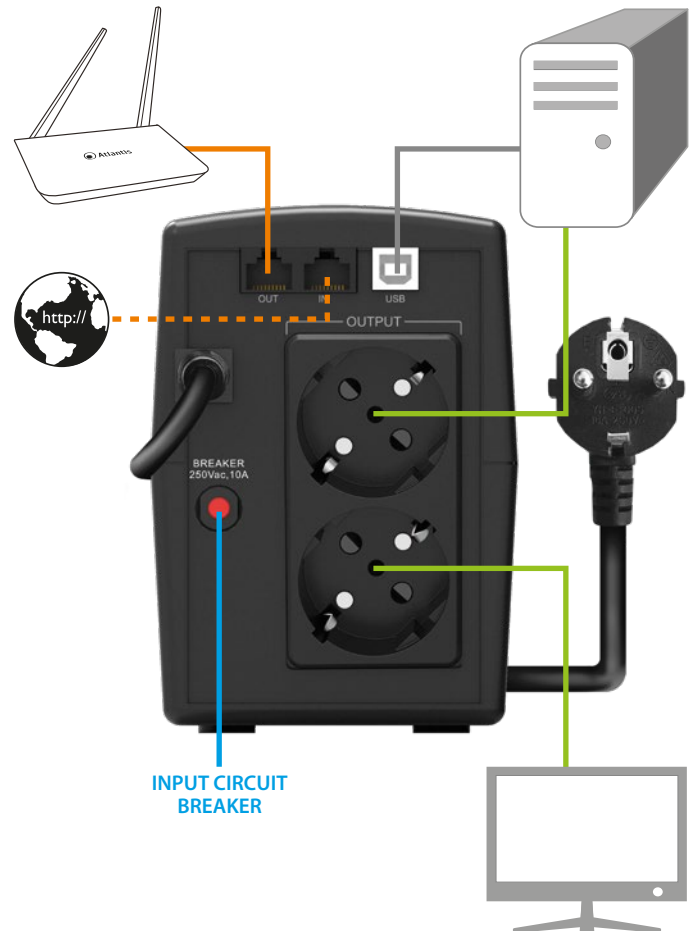
ADVANCED
AVR
2 BOOST
1 BUCK

LCD



SPECIFICHE TECNICHE

POWER RATING (VA)	800
POWER RATING (W)	480
INPUT	- Voltage: 140-300V - Frequency: 50Hz±5%
OUTPUT	- Voltage: 203-262 [AC/AVR] / 230V(±10%) [Battery] - Frequency: 50Hz (±1%) - Advanced AVR: Built-in (2 Boost, 1 Buck) - Waveform: Pure SineWave
TRANSFER Line/Battery	4 ms typical, max 10ms
EFFICIENCY	Total Efficiency Over 85%
BATTERY	- Voltage: 12VDC - Capacity: 12V/9.0Ah - Quantity: 1 - Recharge Time: 4 hours to (90%) - Type: Sealed Maintenance Free Lead Acid VRLA Type
INDICATORS	LCD: Utility Normal, Backup, Battery Load, Input Voltage, Output Voltage, Load and Battery / Fault conditions
PROTECTION	- Overload AC (beep twice a sec) - Overload Inverter (beep twice a sec) - Short Circuit INV ICB & Electric Circuit - Short Circuit AC Electric Circuit - Battery Over-drain Two stages: Controlled Battery Low Warning & Cut Off - Spike Suppression - Noise Suppression (Fanless)
ALARMS	- Battery Mode (sound every 30 seconds) - Low Battery (sound every 2 seconds) - OverLoad (sound every 0.5 seconds) - Battery Replacement Alarm (sound every 2seconds) - Fault (continuously sounding)
CONNECTIONS	Output 2xSchuko Computer USB (HID) RJ45/11
ACTIVE FAN	N/A
NOISE LEVEL	Less than 40dB
DIMENSIONS (WxHxD)	96 x 138 x 286 mm
NET WEIGHT	4,5 Kg (with Battery)
ENVIRONMENTS	- Temperature 0°-40° C - Humidity 0-90% (non-condensing)
CERTIFICATION	CE



BACKUP TIME	100% 480W	75% 360W	50% 240W	25% 120W
Minute / Seconds	Few Seconds	0':30"	4':20"	17':40"

UPS

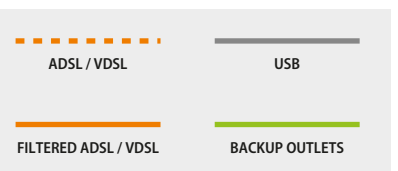
Code: A03-HP1003

EAN: 8026974023144

Tutti i marchi riportati sono registrati ed appartengono ai rispettivi proprietari. Le specifiche riportate possono cambiare senza preavviso. Nessuna responsabilità per errori e/o omissioni | All rights registered. Specifications are subject to change without prior notice. No liability for technical errors and/or omissions.



Atlantis



800 VA

HOSTPOWER 1003

Line-Interactive Sinewave UPS



- Microprocessor Based Design Line Interactive SineWave Topology
- Wide input range application without using battery power (AVR, 2 boost, 1 Buck)
- Transfer time less than 4ms (max 10ms)
- Long time backup (battery 12V@9Ah)
- Advanced Battery Management & Easy Swappable Battery Function
- LCD Display
- USB (HID) Communication Interface
- Modem Internet Protection
- Management Software

480
WATT

CPU

AVR



BATTERY
12V@9Ah



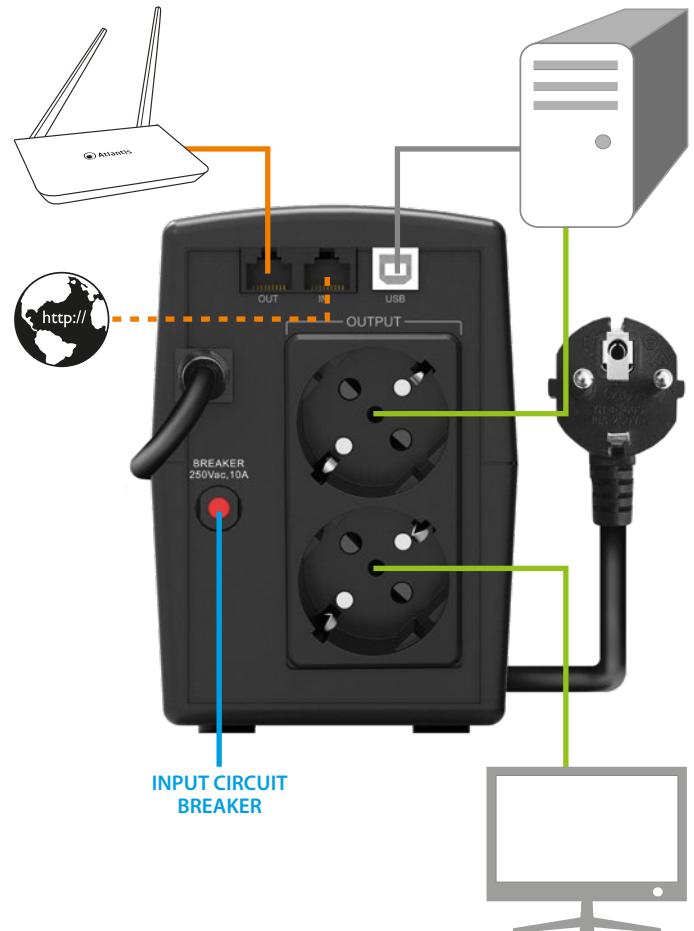
ADVANCED
AVR
2 BOOST
1 BUCK

LCD



TECHNICAL SPECIFICATIONS

POWER RATING (VA)	800
POWER RATING (W)	480
INPUT	- Voltage: 140-300V - Frequency: 50Hz±5%
OUTPUT	- Voltage: 203-262 [AC/AVR] / 230V(±10%) [Battery] - Frequency: 50Hz (±1%) - Advanced AVR: Built-in (2 Boost, 1 Buck) - Waveform: Pure SineWave
TRANSFER Line/Battery	4 ms typical, max 10ms
EFFICIENCY	Total Efficiency Over 85%
BATTERY	- Voltage: 12VDC - Capacity: 12V/9.0Ah - Quantity: 1 - Recharge Time: 4 hours to (90%) - Type: Sealed Maintenance Free Lead Acid VRLA Type
INDICATORS	LCD: Utility Normal, Backup, Battery Load, Input Voltage, Output Voltage, Load and Battery / Fault conditions
PROTECTION	- Overload AC (beep twice a sec) - Overload Inverter (beep twice a sec) - Short Circuit INV ICB & Electric Circuit - Short Circuit AC Electric Circuit - Battery Over-drain Two stages: Controlled Battery Low Warning & Cut Off - Spike Suppression - Noise Suppression (Fanless)
ALARMS	- Battery Mode (sound every 30 seconds) - Low Battery (sound every 2 seconds) - OverLoad (sound every 0.5 seconds) - Battery Replacement Alarm (sound every 2seconds) - Fault (continuously sounding)
CONNECTIONS	Output 2xSchuko Computer USB (HID) RJ45/11
ACTIVE FAN	N/A
NOISE LEVEL	Less than 40dB
DIMENSIONS (WxHxD)	96 x 138 x 286 mm
NET WEIGHT	4,5 Kg (with Battery)
ENVIRONMENTS	- Temperature 0°-40° C - Humidity 0-90% (non-condensing)
CERTIFICATION	CE



BACKUP TIME	100% 480W	75% 360W	50% 240W	25% 120W
Minute / Seconds	Few Seconds	0':30"	4':20"	17':40"

UPS
Code: A03-HP1003
EAN: 8026974023144

Tutti i marchi riportati sono registrati ed appartengono ai rispettivi proprietari. Le specifiche riportate possono cambiare senza preavviso. Nessuna responsabilità per errori e/o omissioni | All rights registered. Specifications are subject to change without prior notice. No liability for technical errors and/or omissions.



Atlantis

