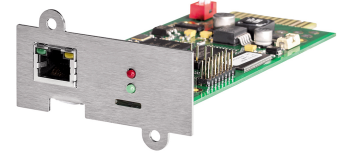


## Legrand CS141B SK

**Marchio :** Legrand

**Codice prodotto:** 310931

**Nome del prodotto :** CS141B SK



Legrand CS141B SK. Tipo di prodotto: Scheda di gestione della rete, Colore del prodotto: Verde, Grigio, Supporto MIB: RFC 1628. Tipo interfaccia: RJ-45. Tipo di interfaccia Ethernet: Fast Ethernet, Velocità trasferimento Ethernet LAN: 10,100 Mbit/s, Tecnologia di cablaggio: 10/100. Protocolli di gestione: SNMP v2/v3, Protocolli di rete supportati: IPv4, IPv6, HTTP, HTTPS, DNS, DHCP, SMTP, NTP, SFTP, UPSTCP (UNMS), MODBUS over IP, RCCMD. Voltaggio di ingresso: 12 V, Corrente d'ingresso: 0.15 A

Caratteristiche		Caratteristiche di gestione	
Tipo di prodotto *	Scheda di gestione della rete	Protocolli di gestione	SNMP v2/v3
Colore del prodotto	Verde, Grigio	Protocolli di rete supportati	IPv4, IPv6, HTTP, HTTPS, DNS, DHCP, SMTP, NTP, SFTP, UPSTCP (UNMS), MODBUS over IP, RCCMD
Indicatori LED	✓	Syslog	✓
Supporto MIB	RFC 1628	<b>Gestione energetica</b>	
Certificazione	CE, UL / NEMKO	Voltaggio di ingresso	12 V
Quantità	1	Corrente d'ingresso	0.15 A
<b>Display</b>		<b>Dimensioni e peso</b>	
Display incorporato	✗	Larghezza	60 mm
<b>Connettività</b>		Profondità	120 mm
Tipo interfaccia	RJ-45	Altezza	29 mm
Quantità porte Ethernet LAN (RJ-45)	1	Peso	66 g
<b>Collegamento in rete</b>		<b>Condizioni ambientali</b>	
Tipo di interfaccia Ethernet	Fast Ethernet	Intervallo temperatura di funzionamento	0 - 70 °C
Velocità trasferimento Ethernet LAN	10,100 Mbit/s	Intervallo di temperatura	0 - 70 °C
Tecnologia di cablaggio	10/100	<b>Dettagli tecnici</b>	
Standard di rete	IEEE 802.3, IEEE 802.3u	Famiglia processore	ARM
<b>Caratteristiche di gestione</b>		Frequenza del processore	800 MHz
Gestione web-based	✓	Memoria flash	512 MB
		Capacità RAM	128 MB



3414970911933

Disclaimer. The information published here (the "Information") is based on sources that can be considered reliable, typically the manufacturer, but this Information is provided "AS IS" and without guarantee of correctness or completeness. The Information is only indicative and can be changed at any time without notification. No rights can be based on the Information. Suppliers or aggregators of this Information do not accept any liability with regard to the content of (web)pages and other documents, including its Information. The publisher of the Information can not be held liable for the content of 3rd party websites that are linking this Information or are linked to from this Information. You as the User of the Information are solely responsible for the choice and usage of this Information. You are not entitled to transfer, copy or otherwise multiply or distribute the Information. You are obliged to follow the directions of the copyright owner(s) with regard to the use of the Information. Exclusively Dutch law is applicable. With regard to price and stock data on the site, the publisher followed a number of starting points, which are not necessarily relevant for your private or business circumstances. Therefore, the price and stock data are only indicative and are subject to changes. You are personally responsible for the way you use and apply this information. As a user of the Information or sites or documents in which this Information is included, you will adhere to standard fair use including avoidance of spamming, ripping, intellectual-property violations, privacy violations, and any other illegal activity.

Publication date: 28-MAR-2024. Prints or copies of Information are only valid on the printed Publication date